

ADMINISTRATION



LAU PRESIDENTS

President's Name	Years of Service
Frances Irwin	1924 – 1935
Winifred Shannon	*1935 – 1937
William A. Stoltzfus	1937 – 1958
James H. Nicol	*1941 – 1943
Rhoda Orme	*1954 – 1955
Grace Loucks Elliot	*1958 – 1959
Frances M. Gray	1959 – 1965
Salwa Nassar	1965 – 1967
Cornellius B. Houk	*1967
Marie Sabri	1967 – 1969
William H. Schechter	1969 – 1973
Albert Y. Badre	1973 – 1982
Riyad F. Nassar	1982 – 2004
Joseph G. Jabbra	2004 – present

* *Acting President*

BOARD OF TRUSTEES AND INTERNATIONAL ADVISORS

Board of Trustees

Dr. Paul F. Boulos, Chair
Mr. Salim G. Sfeir, Vice Chair
Mr. Fred Rogers, Secretary
Mr. Mike Ahmar
H.E. Amb. Gilbert Chagoury
Rev. Christine Chakoian
Mrs. Eva Kotite Farha
Dr. Benita Ferrero-Waldner
Mr. Antoine Frem
Mr. Arthur Gabriel
Dr. Ray Irani
Mr. Wadih (Bill) Jordan
Rev. Joseph Kassab
Mr. Samer Khoury
Mr. Charles Muller
Mr. Richard (Dick) Orfalea
Mr. Todd Petzel
Mr. Ghassan Saab
Dr. H. John Shammas, M.D.
Rev. Ronald L. Shive
Mr. Philip Stoltzfus
Mr. Peter Tanous
Dr. George E. Thibault, M.D.
Mr. Abdallah Yabroudi

Emeritus Trustees

Mr. Jose Abizaid

Ex-officio Members

Mr. Kanan Hamzeh
Rev. Dr. Nuhad Tomeh
Rev. Fadi Dagher
Dr. Joseph Jabbra, *LAU President*
Dr. Camille Issa, *Chair of the Faculty Senate*

Board of International Advisors

Mr. Kanan Hamzeh, Chair
Mr. George Doumet, Secretary
H.E. Ivonne A. Baki
Mr. Bassem F. Dagher
Mr. Mazen S. Darwazah
Mr. Neemat G. Frem
Mrs. Maha Kaddoura
Dr. Raymond Audi
Mrs. Taline Avakian
Dr. Jihad Azour
Mr. Zuhair Boulos
Mrs. Abla Chammas
Dr. Mahmoud A. Kreidie
Dr. Mary Mikhael
Mrs. Adalat Audeh Nakkash
Mr. Mazen Nazzal
Mrs. Youmna Salame
Mr. Talal K. Shair

Ex-officio Members

Rev. Fadi Dagher
Dr. Joseph Jabbra, *LAU President*
Dr. Camille Issa, *Chair of the Faculty Senate*
Mrs. Leila Saleeby Dagher,
President of the Alumni Association

UNIVERSITY OFFICERS - FALL 2012

University Officers

Officer	Highest Degree Earned	Administrative Title
Joseph G. Jabbra	Ph.D.	President
George Najjar	Ph.D.	Provost
Elise Salem	Ph.D.	Vice President for Student Development and Enrollment Management
Roy Majdalani	M.B.A.	Vice President for Human Resources and University Services
Emile Lamah	B.S., CPA	Vice President for Finance
Cedar Mansour	J.D.	Vice President and General Counsel, Special Assistant to the President

Deans of Schools

Officer	Highest Degree Earned	Administrative Title
Elie Haddad	Ph.D.	Dean of the School of Architecture & Design
Philippe Frossard	Ph.D.	Dean of the School of Arts & Sciences
Said El Fakhani	Ph.D.	Dean of the School of Business
George E. Nasr	Ph.D.	Dean of the School of Engineering
Youssef Comair	M.D., FRCSC.	Dean of the School of Medicine
Nancy Hoffart	Ph.D.	Founding Dean of the School of Nursing
Pierre Zalloua	Ph.D.	Dean of the School of Pharmacy

Academic Affairs Officers

Officer	Highest Degree Earned	Administrative Title
Elie Badr	Ph.D.	Assistant Provost for Academic Programs, Assistant to the President and Strategic Officer for External Projects and Related Entities
Sami Baroudi	Ph.D.	Assistant Provost for Faculty Affairs

School of Architecture & Design

Elie Haddad	Ph.D.	Dean
Farid Jureidini	B.Arch.	Assistant Dean
Maroun Daccache	Ph.D.	Chair, Architecture and Interior Design
Nada Khoury	Ph.D.	Associate Chair, Architecture and Interior Design
Rached Bohsali	D.E.A.	Chair, Fine Arts and Foundation Studies
Silia Abou Arbid	B.Arch.	Associate Chair, Fine Arts and Foundation Studies
Randa Abdel Baki	M.F.A.	Chair, Graphic Design
Tarek Khoury	M.F.A.	Associate Chair, Graphic Design

School of Arts & Sciences

Philippe Frossard	Ph.D.	Dean
-------------------	-------	------

Beirut Campus

Bassel Salloukh	Ph.D.	Associate Dean
Sandra Rizk-Jamati	Ph.D.	Assistant Dean
Mona Knio	Ph.D.	Chair, Communication Arts
Samer Habre	Ph.D.	Chair, Computer Science and Mathematics
Rima Bahous	Ed.D.	Chair, Education
Rula Diab	Ph.D.	Chair, English Language Instruction
Vahid Behmardi	Ph.D.	Chair, Humanities
Ralph Abi Habib	Ph.D.	Associate Chair, Natural Sciences
Sami Baroudi	Ph.D.	Associate Chair, Social Sciences
Latif Zeitouni	Ph.D.	Coordinator, Arabic
Mona Majdalani	Ph.D.	Coordinator, Education Practicum
Huda Ayyash-Abdo	Ed.D.	Coordinator, Psychology

Byblos Campus

Haidar Harmanani	Ph.D.	Associate Dean
Nahla Bacha	Ph.D.	Assistant Dean
Derek Bouse	Ph.D.	Associate Chair, Communication Arts
Danielle Azar	Ph.D.	Associate Chair, Computer Science and Mathematics
Costantine Daher	Ph.D.	Chair, Natural Sciences
Makram Ouais	Ph.D.	Chair, Social Sciences
Therese Nasrallah	M.S.	Coordinator, English Language Instruction
Lydia Tjapkes-Langerwerf	Ph.D.	Coordinator, Humanities
Sima Tokajian	Ph.D.	Coordinator, Graduate Program in Molecular Biology
Nadine Zeeni	Ph.D.	Coordinator, Nutrition

Officer	Highest Degree Earned	Administrative Title
<i>School of Business</i>		
Said El Fakhani	Ph.D.	Dean
<i>Beirut Campus</i>		
Abdallah Dah	Ph.D.	Associate Dean
Said Ladki	Ph.D.	Chair, Hospitality & Marketing
Abdul-Nasser Kassar	Ph.D.	Chair, Information Technology & Operation Management
Silva Karkoulian	Ed.D.	Chair, Management Studies
Walid Marrouch	Ph.D.	Associate Chair, Economics
Bernard Ben Sita	Ph.D.	Associate Chair, Finance & Accounting
<i>Byblos Campus</i>		
Salpie Djoundourian	Ph.D.	Associate Dean
Ghassan Dibeh	Ph.D.	Chair, Economics
Elias Raad	Ph.D.	Chair, Finance & Accounting
Josiane Sreih	Ph.D.	Associate Chair, Management Studies
<i>School of Engineering</i>		
George E. Nasr	Ph.D.	Dean
Samer Saab	Ph.D.	Associate Dean
Barbar Akle	Ph.D.	Assistant Dean
Jean Chatila	Ph.D.	Chair, Civil Engineering
Zahi Nakad	Ph.D.	Chair, Electrical and Computer Engineering
Michel Khoury	Ph.D.	Chair, Industrial and Mechanical Engineering
<i>School of Medicine</i>		
Youssef Comair	M.D., FRCSC.	Dean
Zeinat Hijazi	M.B.B.ch., DCH, MRCP, FRCP, MRCPCH, FRCPCH	Associate Dean for Medical Education
Sola Bahous	M.D. Ph.D.	Assistant Dean, Clinical Affairs
<i>School of Nursing</i>		
Nancy Hoffart	Ph.D.	Founding Dean
Myrna Doumit	Ph.D.	Assistant Dean
<i>School of Pharmacy</i>		
Pierre Zalloua	Ph.D.	Interim Dean
Imad Btaiche	Ph.D.	Associate Dean for Academic Affairs
Jad Abdallah	Ph.D.	Acting Assistant Dean for Student Affairs
Aline Saad	Pharm.D.	Chair, Pharmacy Practice
Roy Kanbar	Pharm.D., Ph.D.	Chair, Pharmaceutical Sciences
Lamis Karaoui	Pharm.D.	Director, Experiential Education

Officer	Highest Degree Earned	Administrative Title
<i>Library</i>		
Cendrella Habre	M.S.	University Librarian
Jospeh Hage	M.A.	Director, Byblos
<i>Center for Lebanese Heritage</i>		
Henri Zgheib	Licence	Director
<i>Center for Program and Learning Assessment</i>		
Rima Bahous	Ed.D.	Director
<i>CISCO Institute</i>		
Bassam Moujabber	M.S.	Acting Director
<i>Human Resources Institute</i>		
Wassim Shahin	Ph.D.	Director
<i>Institute for Banking and Finance</i>		
Elias Raad	Ph.D.	Director
<i>Institute for Diplomacy and Conflict Transformation</i>		
Walid Moubarak	Ph.D.	Director
<i>Institute for Human Genetics</i>		
Pierre Zalloua	Ph.D.	Director
<i>Institute for Peace and Justice</i>		
Irma-Kaarina Ghosn	Ph.D.	Director
<i>Institute for Water Resources and Environmental Technologies</i>		
Jean Chatila	Ph.D.	Director
<i>Institute for Women's Studies in the Arab World</i>		
Dima Dabbous	Ph.D.	Director
<i>Institute of Family and Entrepreneurial Business</i>		
Josiane Sreih	Ph.D.	Director
<i>Institute of Hospitality and Tourism Management Studies</i>		
Said Ladki	Ph.D.	Director

Officer	Highest Degree Earned	Administrative Title
<i>Institute of Islamic Arts, Architecture and Design</i>		
Abdallah Kahil	Ph.D.	Director
<i>Institute of Migration studies</i>		
Paul Tabar	Ph.D.	Director
<i>Media Training and Research Institute</i>		
Yasmine Dabbous	Ph.D.	Director
<i>Software Institute</i>		
Nashat Mansour	Ph.D.	Director
<i>Teacher Training Institute</i>		
Mona Nabhani	Ed.D.	Director
<i>Urban Planning Institute</i>		
Rachid Chamoun	Ph.D.	Director



Student Development and Enrollment Management Officers

Officer	Highest Degree Earned	Administrative Title
<i>Enrollment Management</i>		
Abdo Ghié	M.A.P.	Assistant Vice President for Enrollment Management
<i>Dean of Students</i>		
Raed Mohsen	Ph.D.	Dean, Beirut
Mars Semaan	Ph.D.	Dean, Byblos
<i>Admissions</i>		
Nada Hajj	M.S.	Director, Beirut
Michel Najjar	M.S.	Director, Byblos
<i>Athletics</i>		
Sami Garabedian	M.S.Ed.	Director, Beirut
Joe Moujaes	B.E.	Director, Byblos
<i>Continuing Education Program (CEP)</i>		
Michel Majdalani	M.B.A.	Director, Beirut
Mimi Melki Jeha	Ph.D.	Director, Byblos
<i>Financial Aid and Scholarships</i>		
Samir Obeid	M.S.	Director, Beirut
Ghada Abi Fares	M.B.A.	Director, Byblos
<i>Outreach and Civic Engagement</i>		
Elie Samia	M.A.	Executive Director
<i>Registrar</i>		
Annie Lajinian-Magarian	B.A., T.D.	University Registrar
Fouad Salibi	B.A.	Deputy Registrar
<i>Residence Halls</i>		
Hiam Musharrafeh	M.A.	Supervisor, Beirut
Assia Kanaan	M.Ed.	Supervisor, Beirut
Suzy Saba	T.S.	Supervisor, Byblos
<i>Summer Institute for Intensive Arabic and Culture (SINARC)</i>		
Mimi Melki Jeha	Ph.D.	Director
<i>Testing Services</i>		
Mimi Melki Jeha	Ph.D.	Director

Human Resources and University Services Officers

Officer	Highest Degree Earned	Administrative Title
<i>Business Services</i>		
Salim Chehab	B.E.	Executive Director of Business Services
Jassem Othman	B.E.	Director, Auxiliary Services
Nehmat Aoun	B.S.	Director, Hospitality
Ghassan Atwi	B.A., B.S.	Director, Purchasing, Beirut
Antoine Faris	M.S.	Director, Purchasing, Byblos
Jean Rizk	M.B.A.	Director, Supply
<i>Facilities Management</i>		
George Hamouche	M.S.	Assistant Vice President, Facilities Management
Shaheen Bou Jawdeh	B.E.	Executive Director, Project Management and Contract Administration
Joseph Shebaya	D.I.	Director, Planning and Renovations
Wissam Mansour	B.E.	Director, Physical Plant
Nabil Badran	B.E.	Director, Capital Projects, Beirut
Toufic Smayra	Ph.D.	Director, Capital Projects, Byblos
<i>Human Resources</i>		
Jihad Njeim	M.B.A.	Assistant Vice President, Human Resources
Joseph Michael	D.E.S.	Director, Byblos
<i>Information Technology</i>		
Camille Abou-Nasr	B.E.	Assistant Vice President, Information Technology
Roula Hage	Diplome	Director, IT Applications & Solutions
Nicolas Majdalani	Licence	Director, IT Infrastructure & Support
Hamid Saliba	Diplome	Director, IT Network, Telecom & Multimedia
Brigitte Baroudy	B.S., C.I.S.M.	Director, IT Security
<i>Protection</i>		
Major Ahmad Hassouna	Lieutenant	Director

Finance Officers

Officer	Highest Degree Earned	Administrative Title
<i>Budget and Financial Planning</i>		
Sonia Hajjar	Ph.D.	Assistant Vice President , Budget and Grants
<i>Grants and Contracts</i>		
Sonia Hajjar	Ph.D.	Assistant Vice President , Budget and Grants
<i>Comptroller</i>		
Charles Abu Rjeily	Licence	Assistant Vice President , University Comptroller
Simon Sakr	M.B.A.	Comptroller
<i>Business Office</i>		
Naji Medlej	D.E.A.	Comptroller, Beirut
Michel Chahine	M.B.A.	Comptroller, Byblos

University Advancement Officers

Officer	Highest Degree Earned	Administrative Title
<i>Development</i>		
Robert Hollback	B.S.	Assistant Vice President, Development, North America
Nassib Nasr	M.P.H.	Assistant Vice President, Development, Middle East and Europe
<i>Advancement Services</i>		
Amal Abdel Massih	B.S.	Director, Advancement Services, Beirut
Marge Pfeleiderer	B.A.	Executive Director of Operations, New York
<i>Alumni Affairs Office</i>		
Abdallah Al Khal	M.B.A.	Executive Director of Alumni Relations, Beirut
Edward Shiner	M.M.	Director of Alumni and Special Projects, New York
<i>Marketing and Communications Department</i>		
Peggy Hanna	M.B.A.	Assistant Vice President, Marketing and Communications
<i>Relations Office</i>		
Christian Oussi	M.A.	Executive Director of Public and Media Relations, Beirut

Institutional Research and Assessment officers

Officer	Highest Degree Earned	Administrative Title
Diane Issa Nauffal	Ph.D.	Director

Internal Audit Officers

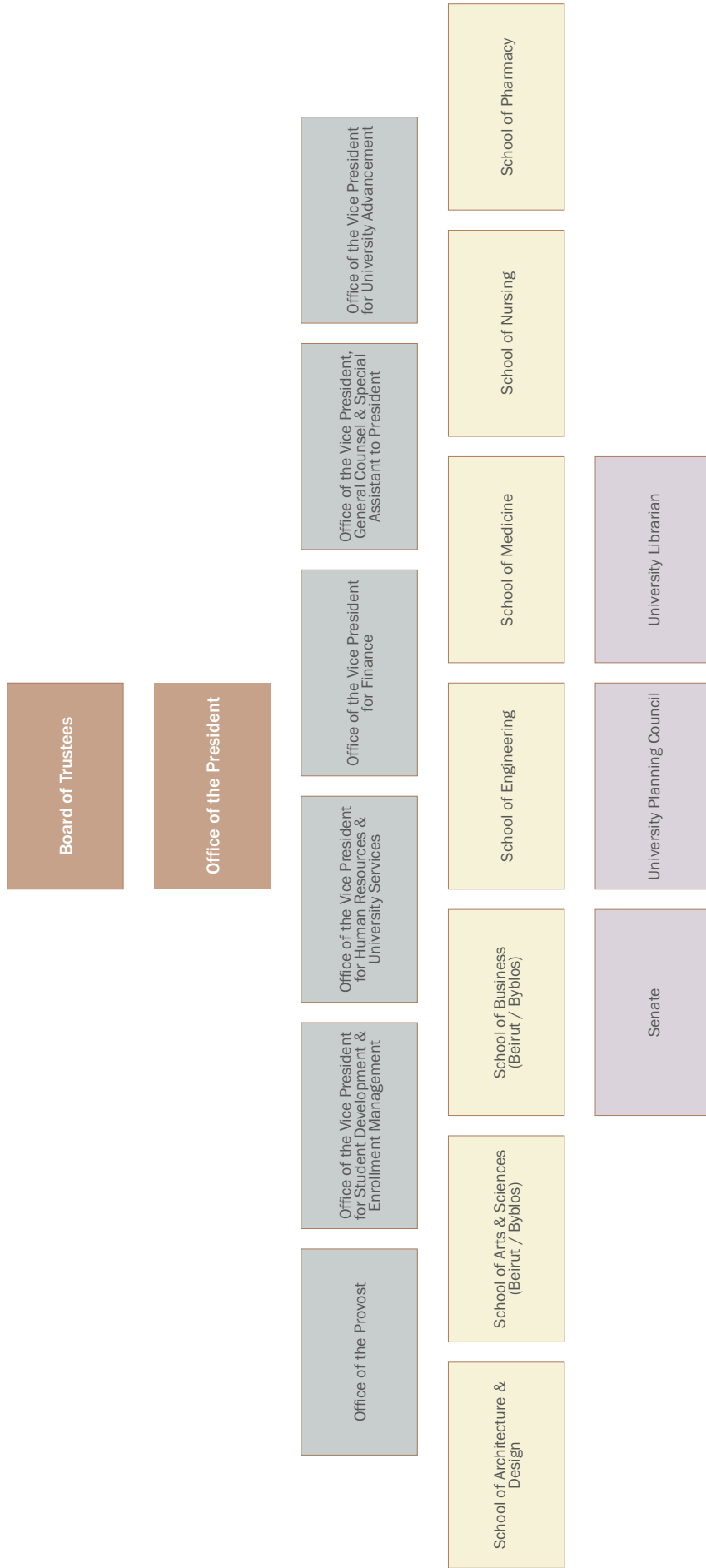
Officer	Highest Degree Earned	Administrative Title
Khaled Abul Husn	M.B.A, C.P.A	Director

University Enterprise Office

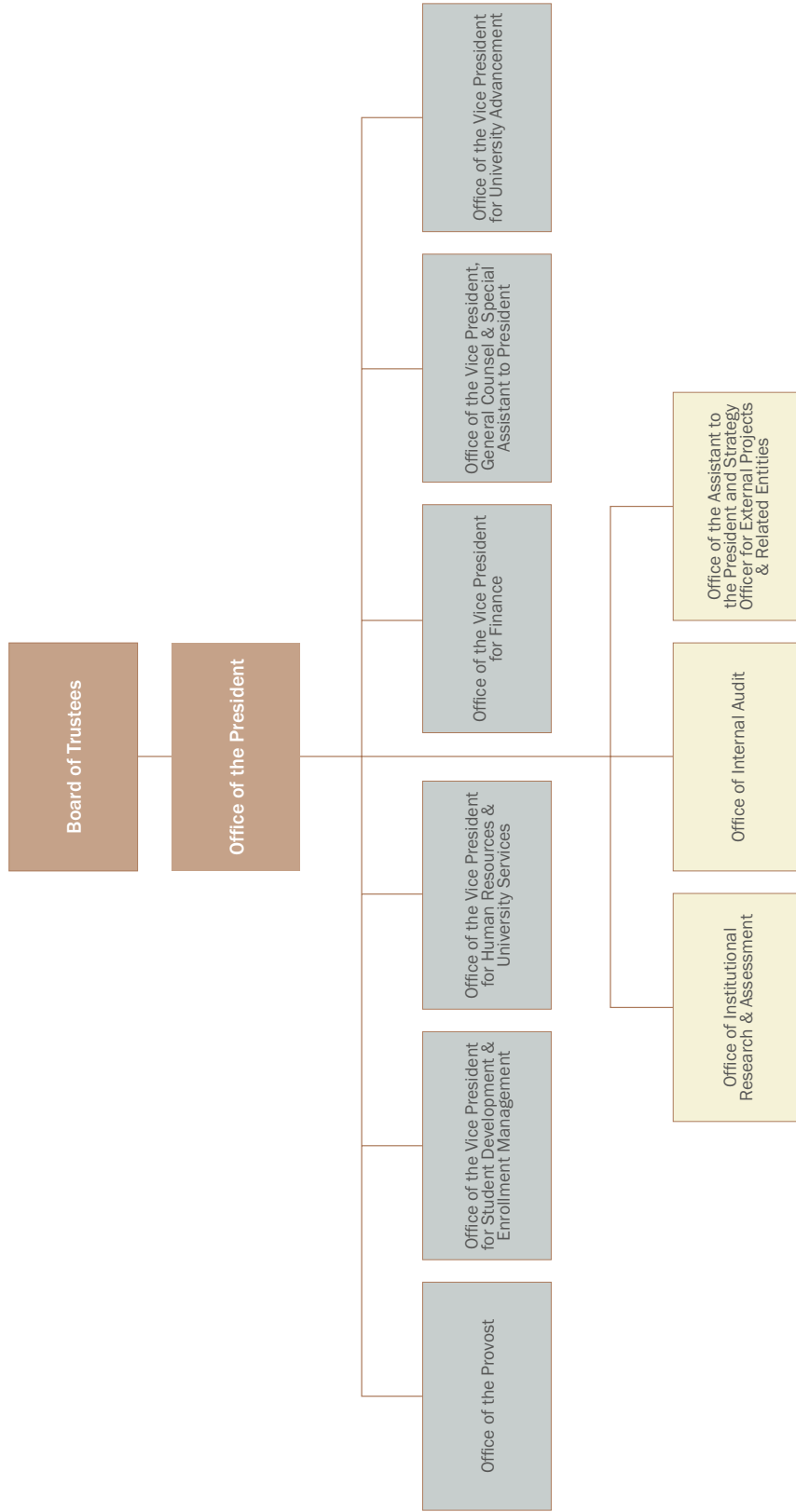
Officer	Highest Degree Earned	Administrative Title
Walid Touma	Ph.D.	Director



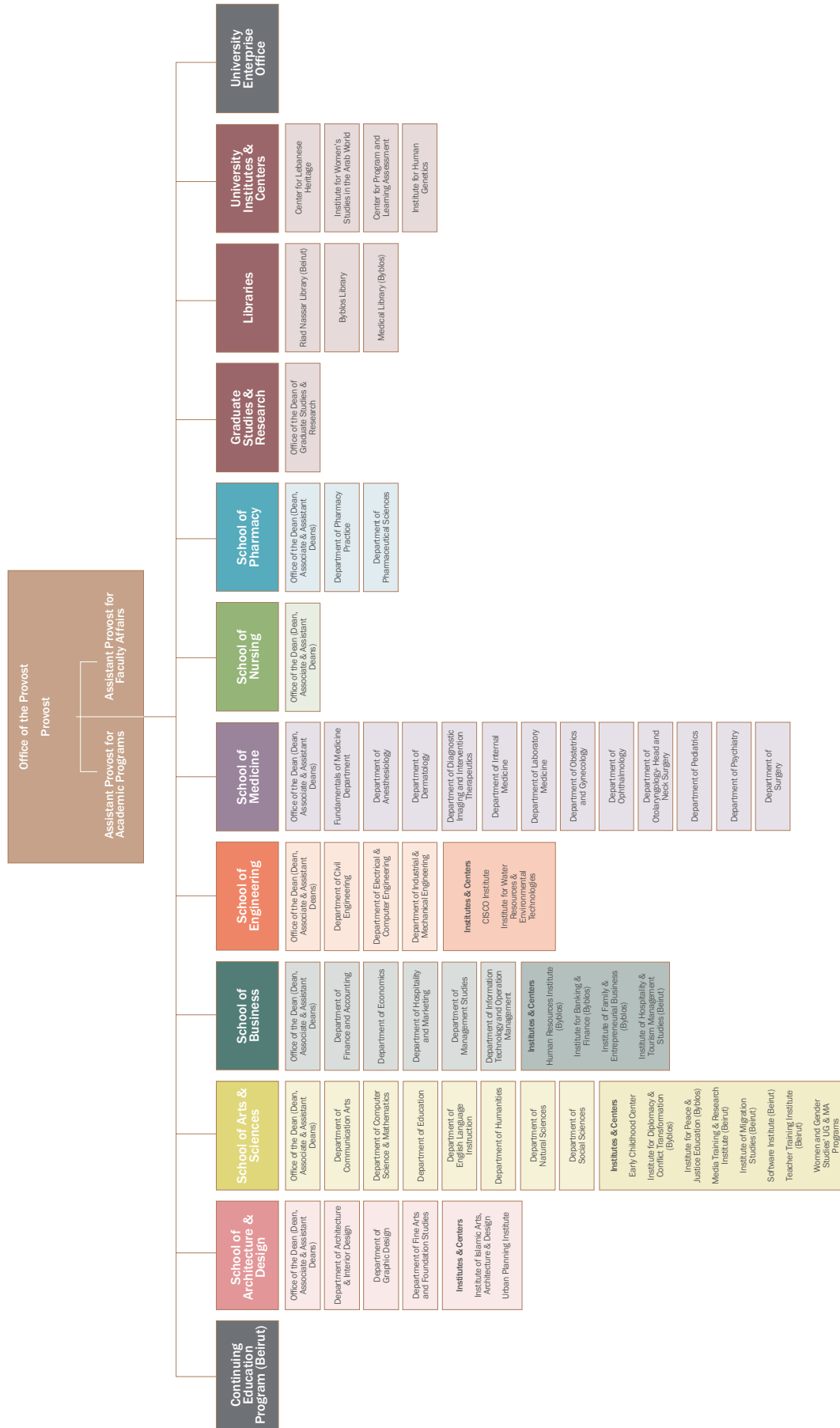
ORGANIZATIONAL CHART – INSTITUTION



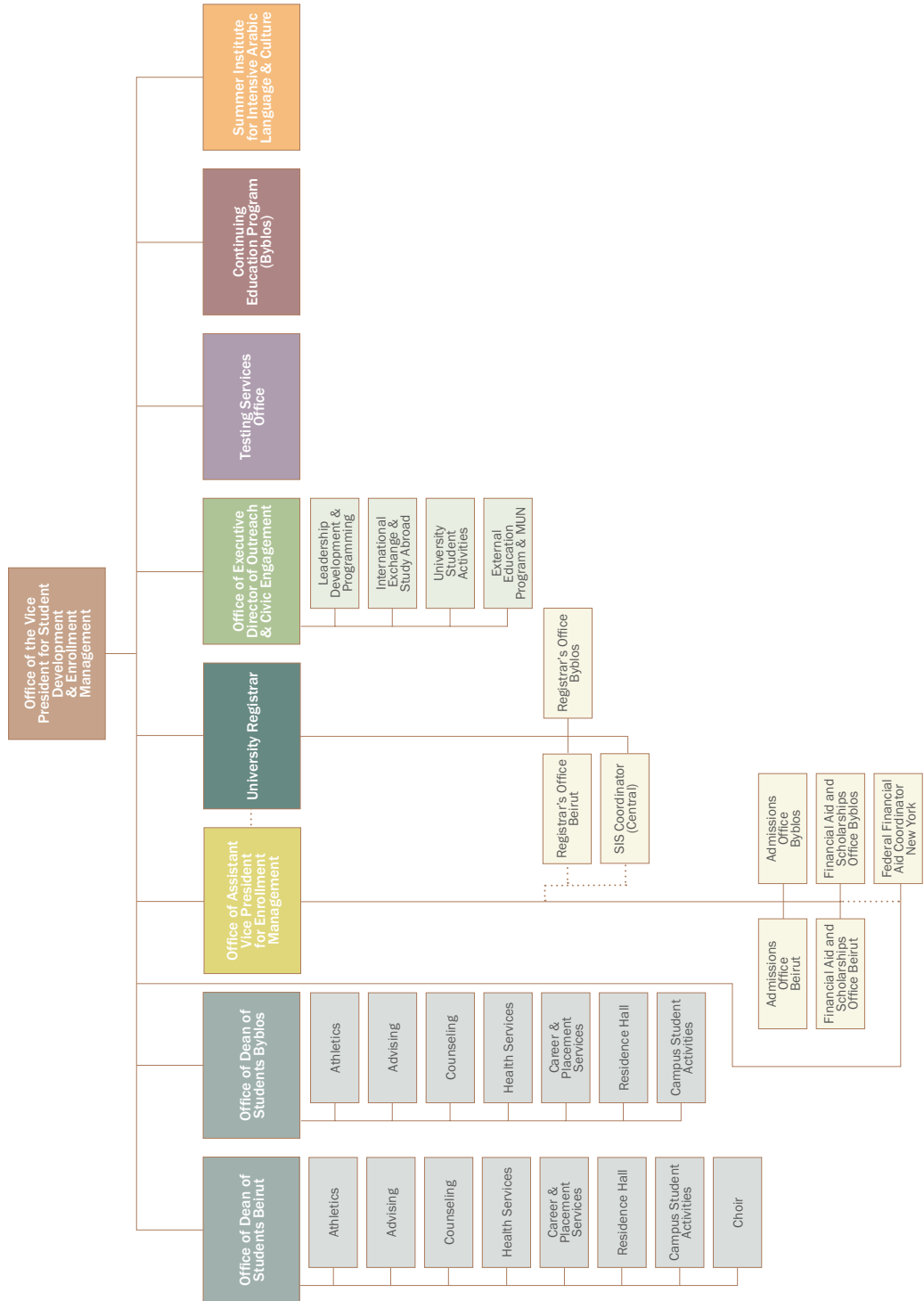
ORGANIZATIONAL CHART – PRESIDENT



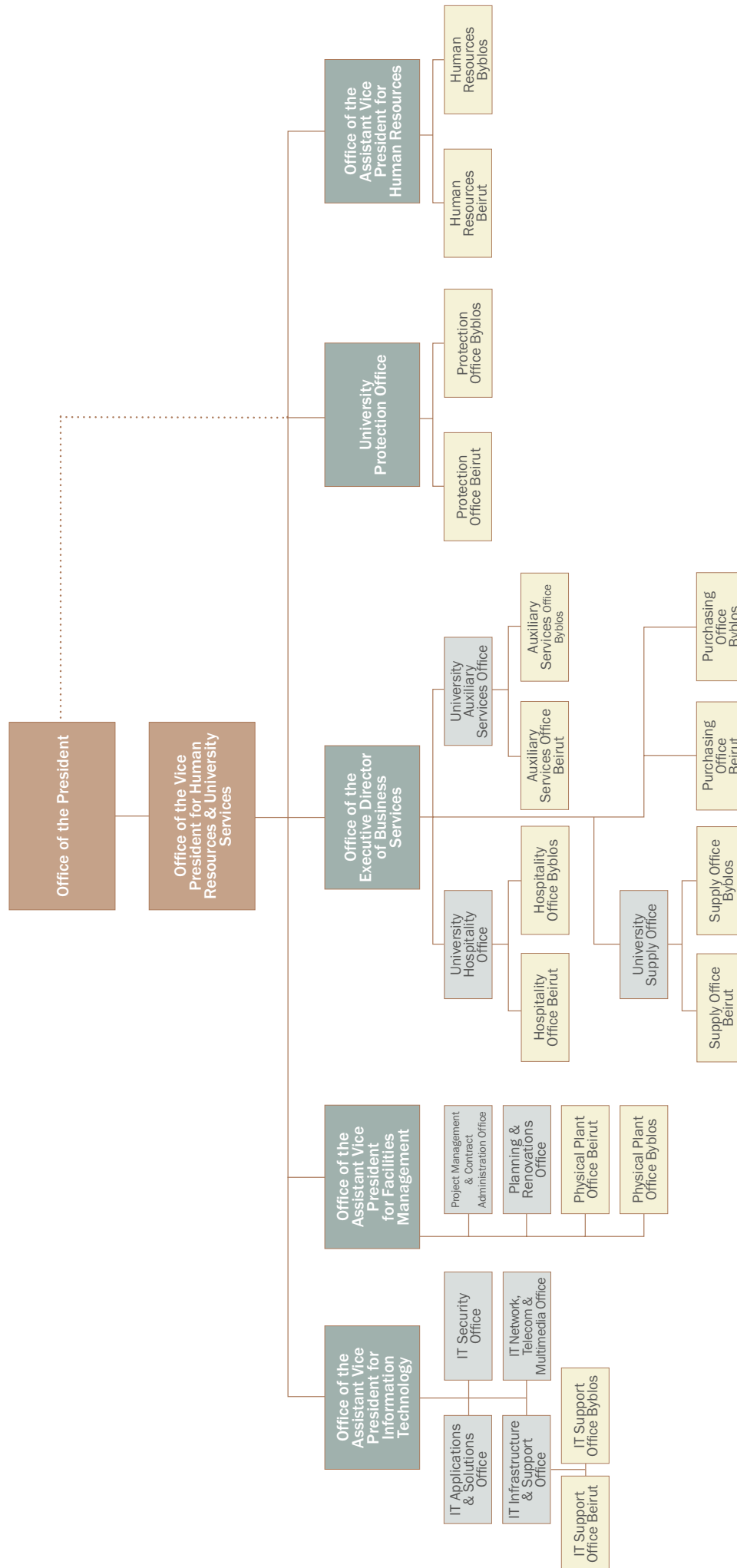
ORGANIZATIONAL CHART – ACADEMIC AFFAIRS



ORGANIZATIONAL CHART – STUDENT DEVELOPMENT AND ENROLLMENT MANAGEMENT



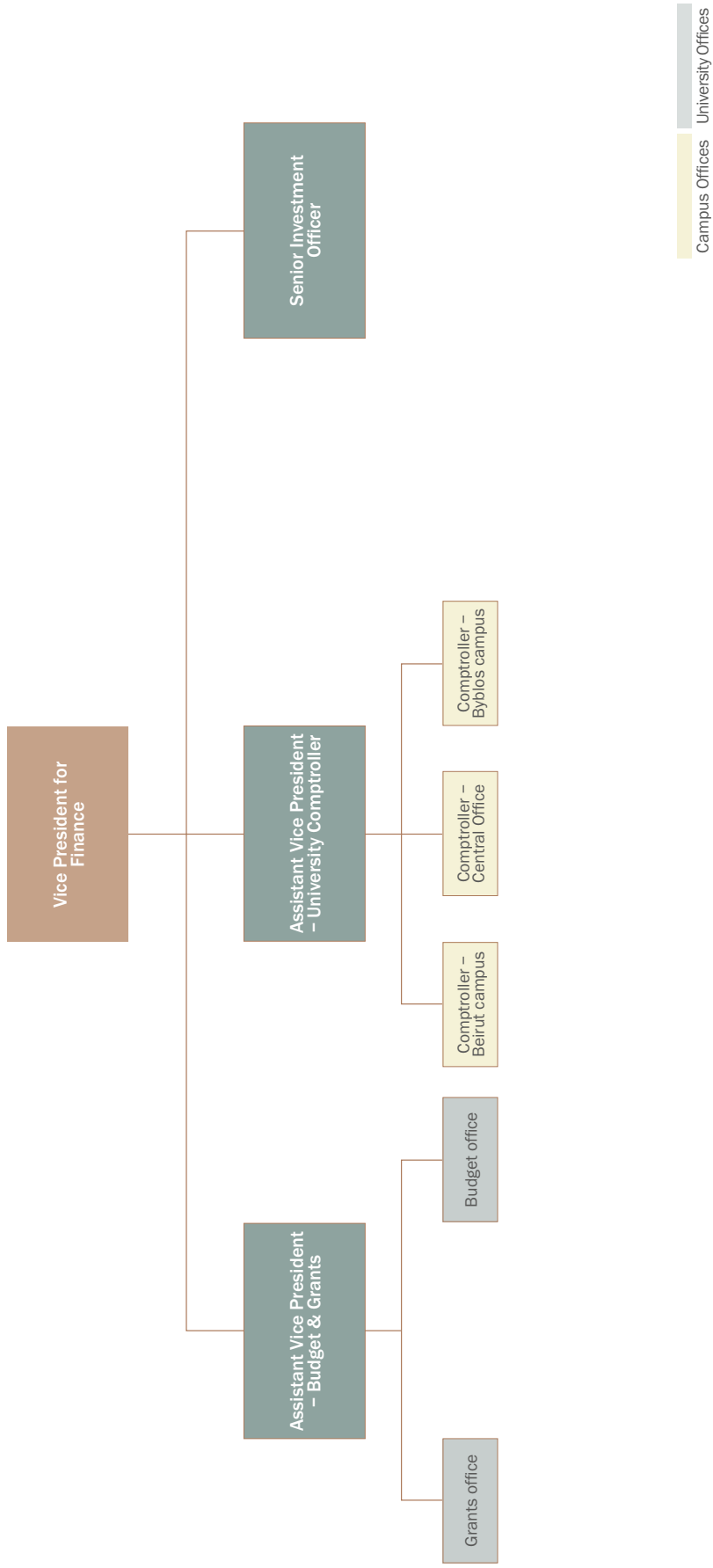
ORGANIZATIONAL CHART – HUMAN RESOURCES AND UNIVERSITY SERVICES



Campus Offices University Offices



ORGANIZATIONAL CHART – FINANCE



ORGANIZATIONAL CHART – UNIVERSITY ADVANCEMENT

