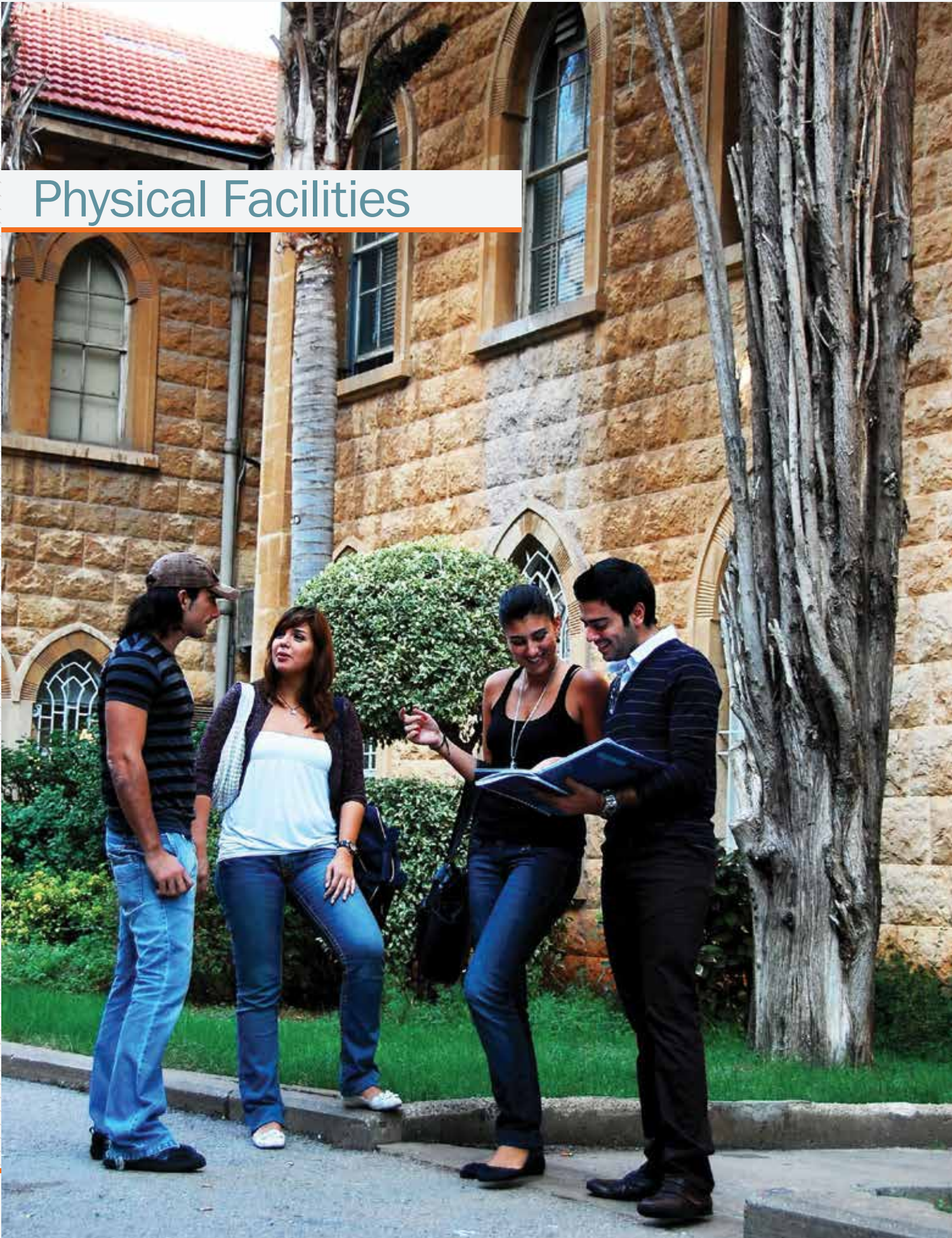


Physical Facilities



UNIVERSITY BUILDINGS & GROUNDS BEIRUT CAMPUS



The 27,500 square meters encompasses 13 buildings with 70,782 square meters of built up areas and 4,550 square meters of greenery.

A GLANCE AT BEIRUT CAMPUS BUILDINGS

Building Name	Area (m ²)	Physical Plant Usage
Sage Hall	2,189	Classrooms - Computer Labs - Natural Science Laboratories - Offices
Nicol Hall	6,032	Cafeteria - Classrooms - Studios - Computer Labs - Offices - Writing Center - Conference Room - IT Workshop - Ceramics Lab
Irwin Hall	4,076	Auditorium - Classrooms - Offices - Conference Rooms
Shannon Hall	882	Offices - Early Childhood Center
University Services Building	1,780	Offices - Data Center
Orme Gray Building	4,359	Offices - Dormitories - Studios - Computer Labs - Memorabilia - Lounge - Workshop
Gymnasium	1,864	Gymnasium - Swimming Pool - Indoor Basket Ball Court - Outdoor Tennis Court - Dancing Rooms
Safadi Fine Arts	3,791	Offices - Studios - Photography Lab - Gulbenkian Amphitheater - Classrooms - Lecture Halls - Exhibition Room - Sculpture Room
Wadad Khoury Student Center	4,066	Recreational Room - Lounges - Offices - Classrooms/Testing Room - Lecture Hall - Cyber Café - Music Room - Practice Rooms - Study Room - Fitness Center - One-Stop-Shop - Dancing Room - Conference Room - Health Services Office
Adnan Kassar School of Business	5,804	Offices - Classrooms - Computer Lab - Simulation Lab - Lecture Hall - Meeting Rooms
Riyad Nassar Library	8,283	Library - Conference Rooms - Classroom
Beirut Underground Parking	11,111	Technical Area - Parking
Gezairi Building	16,546	Construction will start soon to house the School of Architecture & Design

UNIVERSITY BUILDINGS & GROUNDS BYBLOS CAMPUS



The Byblos Campus consists of 16 buildings with a land lot area of 316,263 square meters, a total built-up area of 76,758 square meters and 11,450 square meters of greenery.

A GLANCE AT BYBLOS CAMPUS BUILDINGS

Building Name	Area (m ²)	Physical Plant Usage
Block A Building	7,904	Offices - Computer lab - Science Labs - Classrooms - Conference Rooms
Residence Hall B	11,442	Dormitories - Writing Center - Music Room- Dancing Room - Lounge
Cafeteria	582	Cafeteria
Science Building	5,432	Classrooms - Laboratories - Library - Central Administration
Tohme Rizk Building	952	Offices
Architecture Hall	2,830	Classrooms - Studios - Computer Lab - Offices - Workshop
Bassil Hall	1,124	Offices - Lounge
Zakhem Engineering Hall	4,423	Classrooms - Laboratories - Computer Lab - Offices
Student Center	922	Student Lounge - Gymnasium - Health Services Office - Offices
Library Extension	453	Offices
Frem Civic Center	4,716	Computer Lab - Classrooms/Testing Rooms - Offices - Multi-purpose room - Conference Rooms - Lounge
Engineering Laboratories	180	Laboratories
Underground Parking	19,000	Parking
Gilbert & Rose-Marie Chagoury-Health Sciences Center	15,500	Classrooms - Laboratories - Computer Lab - Library - Offices - Auditorium - Cyber Café - Conference Rooms
Gate House	130	Guard House
Residence Hall C	873	Dormitories

BYBLOS CAMPUS PARKING FACILITIES



No. of Vehicles	Code on Map	No. of Vehicles
Lower Parking (RIGHT)	A	180 cars
Lower Parking (LEFT)	B	180 Cars
Science Parking	C	94 cars
Residence Hall B Outdoor Parking	D	13 Buses
Residence Hall B Underground Parking	E	79 cars
Block A Underground Parking	F	18 cars
Byblos Underground Parking	G	568 cars
Upper Gate	I	55 cars
Parking In front of Engineering Labs and Workshops Building	J	44 cars
Parking behind Frem Civic Center	K	160 cars
Total No. of Vehicles		1391



Waiting station



Security Kiosk



Parking Landscaping

OFF-CAMPUS RENTALS



WITHIN BEIRUT

4,694 square meters were rented to provide additional physical facilities to meet the expansion needs in support of the administrative and academic requirements as well as that of the housing and storage needs.

WITHIN BYBLOS

In year 2011, 2,296 square meters were rented to provide additional dormitories near the campus to accommodate the increase in the housing needs.



OTHER LOCATIONS WITHIN LEBANON



EXECUTIVE CENTER AT BEIRUT CENTRAL DISTRICT

Spread across 600 square meters in the heart of Beirut, the Executive Center includes fully equipped classrooms, conference room, studio, lounge and offices to best serve its goal for offering executive learning.

LAU MEDICAL CENTER - RIZK HOSPITAL

LAU's Expansion into the field of medical education was buttressed by the acquisition of a majority shareholder position in the LAUMC-RH with a total built-up area of 7,900 square meters.



LOUIS CARDAHI MUSEUM

The Louis Cardahi Museum and Foundation was donated to LAU in August 2013. It houses historical artifacts, artwork, documentary films and a small library to promote respect for Byblos' architectural, cultural and historical legacy.

INTERNATIONAL LOCATIONS



LAU NEW YORK HEADQUARTERS AND ACADEMIC

The state-of-the-art facility in New York, inaugurated in September 2013, houses LAU's New York Academic Center. A built-up area of 2,400 square meters accommodates fully equipped instructional resources, library, student lounge and offices. The opening of the New York center exemplified the university's pioneering commitment to global education and cross-cultural understanding.



UPDATE ON BEIRUT CAMPUS PROJECTS 2014-2015

COMPLETED PROJECTS

SIGNAGE TO ADNAN KASSAR SCHOOL OF BUSINESS

This project included the design and installation of Adnan Kassar School of Business signage further to its inauguration. The Lebanese American University revealed on Tuesday April 21, 2015, the "Adnan Kassar School of Business", in honor of the renowned businessman's ongoing support and highly generous donation to the university; one of the highest in LAU's history, amounting to \$10 million.



BEIRUT INFRASTRUCTURE

This major project included gearing up a high-tech Data Center and building a modern central power plant of 8MW capacity and electrical power distribution through laying a new underground medium-voltage cable network and constructing new electrical rooms and transformers substations. Begun in 2013, the project has been completed and the electrical infrastructure network and systems of the Beirut Campus have been upgraded.



PROJECTS IN PROGRESS

GEZAIRI BUILDING RENOVATION

The concept design for renovation has been approved; design development is in progress to ensure a physical environment of quality assurance and quality improvement. This building will house the School of Architecture and Design and is designed to meet requirements to pursue relevant accreditation for architectural education.



GULBENKIAN AMPHITHEATER

The Gulbenkian Amphitheater, located in the Safadi Fine Arts Building, is gearing up for a major renovation project necessary to upgrade and maintain this storied space as one of Lebanon's premier performance venues. The concept design has been approved, design development is in progress.



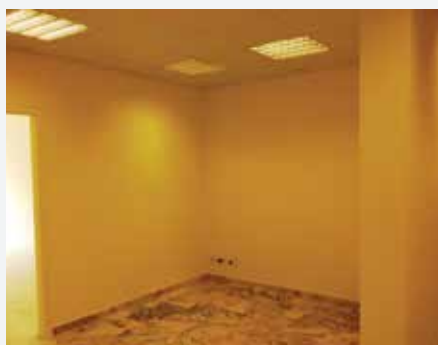
IRWIN HALL RENOVATION

This project includes the renovation of the premises, upgrading the building's systems, renovating the storied Irwin Hall Theater, and optimizing the utilization of space in order to better accommodate the ever-growing needs of the university's administration. A preliminary design has been prepared and design work is expected to be completed by 2016.



REFURBISHMENT OF ATIYAH LEVEL 3

The scope of work includes refurbishing one of the apartments that was newly rented. The project includes the execution of the needed renovation work to provide additional instructional resources to be used as replacement classrooms when Gezairi Building will be shut down for renovation.



AKSB 1208 LECTURE CAPTURE CLASSROOM

The scope of work is to render AKSB 1208 Classroom into a smart lecture capture classroom. This project will be considered a pilot project for the remaining classrooms in Beirut Campus.

INFRASTRUCTURE AKSB CONNECTION

The scope of work includes providing needed infrastructure connections to Adnan Kassar School of Business as a new generator (2000KVA) will be supplied and installed in the Power Plant to replace existing generators.

WKSC L1 ADDITIONAL SHOWER CABINET

The scope of work includes the execution of civil and mechanical works necessary to convert a toilet into additional shower cabinet in the toilets of the Fitness Center.

TENNIS COURT REFURBISHMENT

The scope of work includes the execution of civil, electrical & mechanical works necessary to upgrade the current status of the Gym external Tennis Court.



UPDATE ON BYBLOS CAMPUS PROJECTS 2014-2015

COMPLETED PROJECTS

TOHME RIZK RENOVATION

This building successfully obtained the International Finance Corporation's EDGE (Excellence in Design for Greater Efficiencies certification (the 1st EDGE certified office building in Lebanon), which will result in reductions of 41% in energy, 29% in water, and 34% in materials' embodied energy compared to local benchmarks and will reduce, at no additional capital cost, utility expenses for the building by around US\$600 each month, in addition to saving the environment 21 tCO₂ per year.



The 1st EDGE Certified Office Building in Lebanon

ARCHITECTURE LEVEL 1 RENOVATION

The scope of work was to refurbish the workshops and labs referred to the School of Architecture and Design. This project has been designed and executed with energy conservation features (efficient lighting, occupancy sensors for AC and lighting control, single switch for power cut-off when leaving, ...).



PARKING LOTS A, B & K

Major renovation for an area of 12,100m² has been completed to include fencing, parking lining, irrigation system, excavation and reinforced concrete work, lighting system and the related electrical work, security kiosks, emergency phones, barriers, supply and installation of CCTVs and multimedia equipment, etc. Parking lots A & B needed asphaltting works.



RESIDENCE HALL B LEVEL 4 MUSIC AND DANCING ROOMS

This project has been completed to relocate the music room and dancing room from Block A Building to Residence Hall B in order to provide space to accommodate more offices in Block A Building.



OTHER PROJECTS

Underground Parking - Auxiliary Works

This project included civil, mechanical, electrical and IT auxiliary works for the underground parking.

Residence Hall B Waterproofing for Terraces

The scope of work included the needed work to resolve the issues of water leakages into the dormitories and the external stairs of Residence Hall B.

ARCHITECTURE BUILDING L3/L4 OFFICES

The scope of work included civil, electrical, mechanical, networking and IT active components necessary to renovate and remodel the Architecture Building Offices in Levels 3 and 4 to accommodate new faculty members.



PROJECTS IN PROGRESS

ENGINEERING LABS AND WORKSHOPS BUILDING

This new construction (10,350m²) will replace the existing Engineering Laboratories. It is designed to meet the needs of the School of Engineering in a more efficient and up-to-date manner providing state-of-the-art physical facilities to support the academic developmental needs.



INFRASTRUCTURE & PLANTS

Construction works were awarded, work will start in December 2015. The project consists of providing infrastructure utilities, networks and plants for the Byblos Campus, in addition to all associated earthworks, civil and finishing works. The main work packages are: heating plant (2x1472Kw), chilled water plant (5x2532 T), domestic and irrigation water network, storm drainage and sanitary sewer, power plant (11MVA) and MV/LV distribution networks, water tank (3,500m³), maintenance quarter (400m²) and other miscellaneous systems.



During the course of planning projects, the process involves several planning tasks which ultimately define the projects: needs assessment, feasibility studies, initial project formulation and programming, project planning guide development, funding plan development and special projects.

LIBRARY & CENTRAL ADMINISTRATION BUILDINGS

New Construction for a five levels two buildings to accommodate the Library and the Central Administration will start soon. The project with a built-up area of 8,386m² targets USGBC's LEED Gold certification. Rain water harvesting and re-use is featured at the Byblos' Library and Central Administration project. This project has been designed with low flow sanitary fixtures, achieving 35% water use reduction. Facilities Management are committed to developing sustainable buildings that reduce resource consumption, while protecting the environment and providing a high indoor environmental quality.

