



UNIVERSITY PUBLICATIONS

▶ *Academic Catalog*

The Academic Catalog is the all-encompassing reference on LAU. This annual publication — printed at the end of every summer — includes information on the university's historical background, campuses, academic calendar, schools, academic programs, degrees offered, majors, courses, admission, rules, procedures, facilities, listings and credentials of full-time faculty, administrative officers, tuition, and more.

▶ *LAU Magazine & Alumni Bulletin*

The LAU Magazine & Alumni Bulletin is quarterly publication carrying news about developments, people and events that are of significance to LAU and its extended community. Circulation: 25,000.

▶ *President's Report*

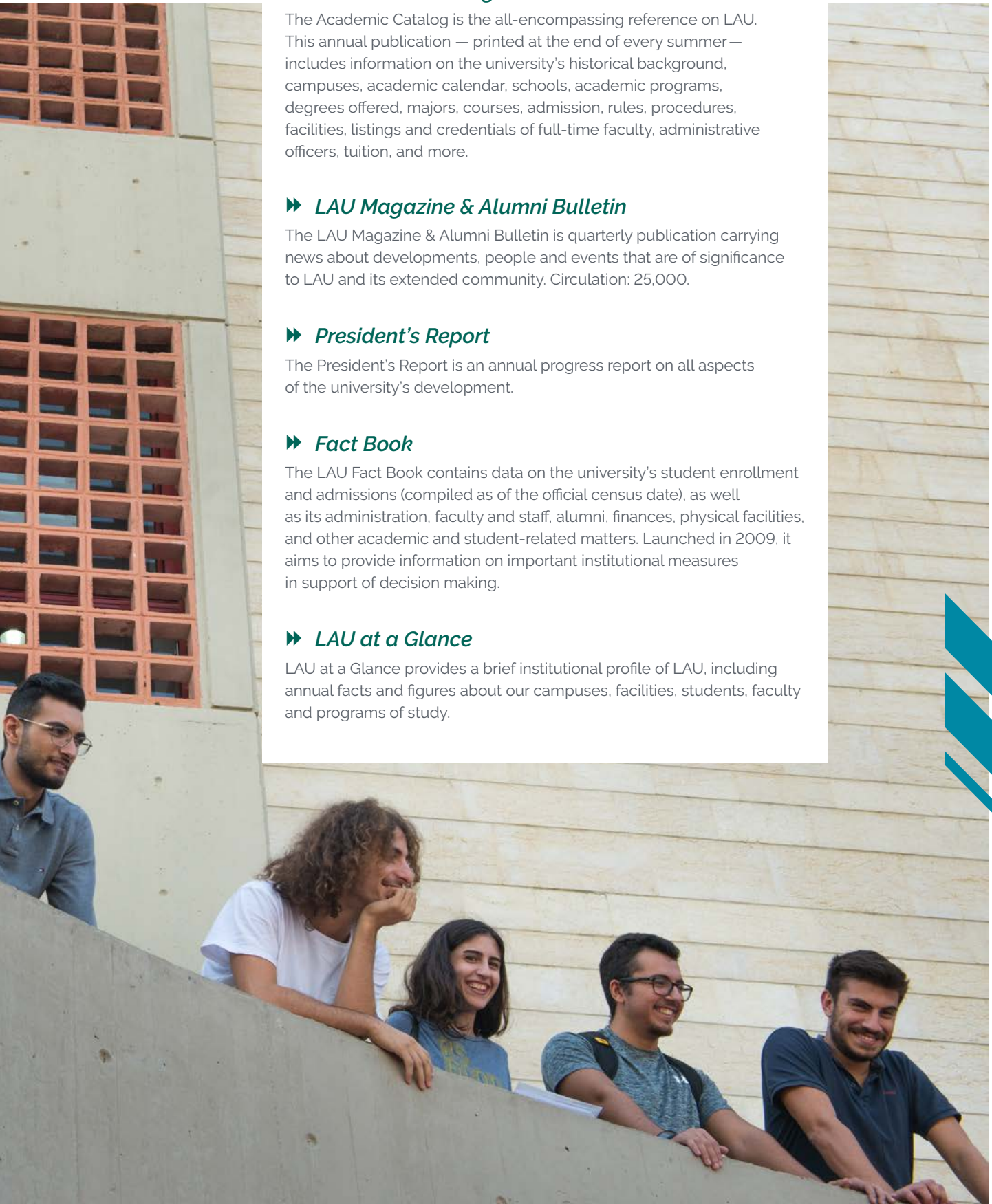
The President's Report is an annual progress report on all aspects of the university's development.

▶ *Fact Book*

The LAU Fact Book contains data on the university's student enrollment and admissions (compiled as of the official census date), as well as its administration, faculty and staff, alumni, finances, physical facilities, and other academic and student-related matters. Launched in 2009, it aims to provide information on important institutional measures in support of decision making.

▶ *LAU at a Glance*

LAU at a Glance provides a brief institutional profile of LAU, including annual facts and figures about our campuses, facilities, students, faculty and programs of study.



PUBLIC DISCLOSURE

Information	Web Addresses	Print Publications
<p>How can inquiries be made about the institution? Where can questions be addressed?</p>	<p>Every official website includes contact information that is relevant to its subject matter. StratCom receives inquiries submitted through the main website and forwards them to the offices concerned.</p> <ul style="list-style-type: none"> • https://www.lau.edu.lb/about/ • https://www.lau.edu.lb/feedback/ • https://www.lau.edu.lb/fees/ • https://www.lau.edu.lb/apply/admission/ (online chat) • https://www.lau.edu.lb/apply/contact.php • https://www.lau.edu.lb/apply/sro.php • https://www.lau.edu.lb/apply/financial-aid/contact.php • https://giving.lau.edu.lb/contact • https://directory.lau.edu.lb/ • https://gsr.lau.edu.lb/about/contact.php • https://dira.lau.edu.lb/staff/ • https://aiw.lau.edu.lb/about/team/ • https://ldf.lau.edu.lb/en/about/administration.php • https://libraries.lau.edu.lb/help/contact.php • https://stratcom.lau.edu.lb/about/contact.php • https://medicine.lau.edu.lb/about/contact.php • https://mepitl.lau.edu.lb/about/contact.php • https://nursing.lau.edu.lb/about/directory.php • https://nyac.lau.edu.lb/contact-us.php • https://pharmacy.lau.edu.lb/contact/ • https://sard.lau.edu.lb/contact.php • https://sas.lau.edu.lb/about/contact.php • https://sas.lau.edu.lb/institutes/isjcr/contact-us.php • https://sas.lau.edu.lb/institutes/ims/contact-us.php • https://sas.lau.edu.lb/institutes/si/contact.php • http://imrt.lau.edu.lb/contact-us • https://sb.lau.edu.lb/contact.php • https://soe.lau.edu.lb/contact/ • https://athletics.lau.edu.lb/activities/ • https://www.lau.edu.lb/experience/career-guidance/contact.php • https://www.lau.edu.lb/experience/health/counseling.php • https://www.lau.edu.lb/experience/health/health-services-office.php • https://www.lau.edu.lb/experience/contact-housing.php • https://www.lau.edu.lb/calendar/registration-advising.php • https://oce.lau.edu.lb/ • https://hes.lau.edu.lb/contact.php • https://honors.lau.edu.lb/contact.php • https://ce.lau.edu.lb/contact/ • https://sinarc.lau.edu.lb/contact/ • https://cil.lau.edu.lb/ • https://csc.lau.edu.lb/about/contact.php • https://ipe.lau.edu.lb/about/contact.php • https://facultysenate.lau.edu.lb/contact/ • https://www.facebook.com/LAUStudents?sk=wall 	<p>Every official publication has contact information printed on the cover and/or appropriate pages.</p>

Information	Web Addresses	Print Publications
Notice of availability of publications and of audited financial statement or fair summary	Publications: <ul style="list-style-type: none"> • https://stratcom.lau.edu.lb/services/publications/ 	Neither item is available in print.
Institutional catalog	<ul style="list-style-type: none"> • https://catalog.lau.edu.lb/ 	
Obligations and responsibilities of students and the institution	<ul style="list-style-type: none"> • https://www.lau.edu.lb/about/policies.php • https://catalog.lau.edu.lb/arp • https://catalog.lau.edu.lb/arp • https://nursing.lau.edu.lb/student-handbook/ • https://pharmacy.lau.edu.lb/files/sop-handbook-2013/sop-handbook-2013.pdf • http://pharmacy.lau.edu.lb/files/pharmd-student-handbook-2013-2014/files/pharmd-student-manual-2013-2014.pdf 	
Information on admission and attendance	<ul style="list-style-type: none"> • https://www.lau.edu.lb/apply/admission/ • https://catalog.lau.edu.lb/ 	Admissions Viewbook 2020–2021
Institutional mission and objectives	<ul style="list-style-type: none"> • https://www.lau.edu.lb/about/mission.php 	Admissions Viewbook 2020–2021 LAU at a Glance 2020 Fact Book 2019–2020
Expected educational outcomes	Each academic program includes goals and expected outcomes. <ul style="list-style-type: none"> • https://www.lau.edu.lb/study/undergraduate/ • https://www.lau.edu.lb/study/graduate.php • https://www.lau.edu.lb/study/executive.php • https://catalog.lau.edu.lb/ 	
Status as public or independent institution; status as not-for-profit or for-profit; religious affiliation	About LAU: <ul style="list-style-type: none"> • https://www.lau.edu.lb/about/ 	LAU at a Glance 2020
Requirements, procedures and policies re: admissions	<ul style="list-style-type: none"> • https://www.lau.edu.lb/apply/admission/ • https://www.lau.edu.lb/about/policies/admissions_policy.pdf • https://catalog.lau.edu.lb/ • https://mepitl.lau.edu.lb/programs/undergraduate/ • https://mepitl.lau.edu.lb/programs/graduate/ 	Admissions Viewbook 2020–2021
Requirements, procedures and policies re: transfer credit	<ul style="list-style-type: none"> • https://www.lau.edu.lb/apply/admission/transfer-student.php • https://www.lau.edu.lb/apply/admission/undergraduate/ • https://sinarc.lau.edu.lb/faq/ • https://catalog.lau.edu.lb/ 	

Information	Web Addresses	Print Publications
A list of institutions with which the institution has an articulation agreement	Affiliations: <ul style="list-style-type: none"> • https://medicine.lau.edu.lb/education/md/local-regional-affiliates.php • https://medicine.lau.edu.lb/education/gme/about/affiliates.php • https://dira.lau.edu.lb/fact-book/ 	Fact Book 2019–2020
Student fees, charges and refund policies	University tuition and fees: <ul style="list-style-type: none"> • https://www.lau.edu.lb/fees/ • https://catalog.lau.edu.lb/ 	Fact Book 2019–2020
Rules and regulations for student conduct	<ul style="list-style-type: none"> • https://www.lau.edu.lb/about/policies/student_code_of_conduct.pdf • https://nursing.lau.edu.lb/student-handbook/ • https://pharmacy.lau.edu.lb/files/sop-handbook-2013/ 	
Procedures for student appeals and complaints	Student Grievance Procedures: <ul style="list-style-type: none"> • https://www.lau.edu.lb/about/policies/grievance_policy.pdf 	
Other information re: attending or withdrawing from the institution	<ul style="list-style-type: none"> • https://catalog.lau.edu.lb/arpu • https://catalog.lau.edu.lb/arpg • https://www.lau.edu.lb/apply/admission/returnees.php 	
Academic programs	<ul style="list-style-type: none"> • https://www.lau.edu.lb/study/undergraduate/ • https://catalog.lau.edu.lb/ • https://dira.lau.edu.lb/fact-book/ 	Admissions Viewbook 2020–2021 LAU at a Glance 2020 Fact Book 2019–2020
Courses currently offered	<ul style="list-style-type: none"> • https://banweb.lau.edu.lb/prod/bwckctlg.p_disp_dyn_ctlg • https://catalog.lau.edu.lb/ 	
Other available educational opportunities	<ul style="list-style-type: none"> • https://ce.lau.edu.lb/ • https://sinarc.lau.edu.lb • https://hes.lau.edu.lb • https://mepitl.lau.edu.lb • https://studyabroad.lau.edu.lb • https://students.lau.edu.lb/international-services/ 	CE Catalog
Other academic policies and procedures	<ul style="list-style-type: none"> • https://www.lau.edu.lb/about/policies.php • http://myportal.lau.edu.lb/sites/FS/Pages/Procedures.aspx • https://myportal.lau.edu.lb/Pages/Procedures.aspx • https://www.lau.edu.lb/calendar/registration-advising.php • https://catalog.lau.edu.lb/ 	
Requirements for degrees and other forms of academic recognition	<ul style="list-style-type: none"> • https://catalog.lau.edu.lb/ 	

Information	Web Addresses	Print Publications
Names and positions of administrative officers	<ul style="list-style-type: none"> • https://www.lau.edu.lb/about/governance/ • https://catalog.lau.edu.lb/2020-2021/university/administration.php • https://dira.lau.edu.lb/fact-book/ 	Fact Book 2019–2020
Names, principal affiliations of governing board members	<ul style="list-style-type: none"> • https://www.lau.edu.lb/about/governance/bot.php • https://catalog.lau.edu.lb/ • https://dira.lau.edu.lb/fact-book/ 	President's Report 2019 (names only) LAU at a Glance 2020 (names only) Fact Book 2019–2020 (names only)
List of current faculty, indicating department or program affiliation, distinguishing between full- and part-time, showing degrees held and institutions granting them	<ul style="list-style-type: none"> • https://catalog.lau.edu.lb/ • http://comm.lau.edu.lb/our-people • https://sas.lau.edu.lb/csm/people/ • https://sas.lau.edu.lb/education/people/ • https://sas.lau.edu.lb/english/people/ • https://sas.lau.edu.lb/humanities/people/ • https://sas.lau.edu.lb/natural-sciences/people/ • https://sas.lau.edu.lb/social-sciences/people/ • https://soe.lau.edu.lb/ce/faculty-staff/ • https://soe.lau.edu.lb/ime/faculty-staff/ • https://soe.lau.edu.lb/ece/faculty-staff/ • http://sard.lau.edu.lb/departments-institutes/design/faculty-staff/ • http://sard.lau.edu.lb/departments-institutes/aid/faculty-staff/ • https://medicine.lau.edu.lb/about/faculty/ • https://nursing.lau.edu.lb/about/people/ • https://pharmacy.lau.edu.lb/faculty/directory.php • https://sb.lau.edu.lb/faculty-research/faculty/ • https://ce.lau.edu.lb/about/faculty/ 	
Locations and programs available at branch campuses, other instructional locations, and overseas operations at which students can enroll for a degree, along with a description of programs and services available at each location	<p>https://www.lau.edu.lb/locations/</p> <p><i>We don't have a Beirut campus or Byblos campus catalog. We present the information in a centralized way and, wherever a program is described, we strive to specify where it is available. See each academic program page on</i></p> <p>https://www.lau.edu.lb/study/undergraduate/</p>	
Programs, courses, services, and personnel not available in any given academic year.	<ul style="list-style-type: none"> • https://banweb.lau.edu.lb/prod/bwckctlg.p_disp_dyn_ctlg • https://catalog.lau.edu.lb/ 	

Information	Web Addresses	Print Publications
Size and characteristics of the student body	<ul style="list-style-type: none"> • https://www.lau.edu.lb/about/facts.php • https://dira.lau.edu.lb/fact-book/ • https://dira.lau.edu.lb/reports-data/ 	LAU at a Glance 2020 Fact Book 2019–2020 Facts 2019–2020
Description of the campus setting	<ul style="list-style-type: none"> • https://www.lau.edu.lb/locations/ 	
Availability of academic and other support services	<ul style="list-style-type: none"> • https://libraries.lau.edu.lb/ • https://www.lau.edu.lb/experience/ • https://www.lau.edu.lb/apply/financial-aid/ • https://www.lau.edu.lb/apply/scholarships.php • https://medicine.lau.edu.lb/education/md/curriculum.php • https://nursing.lau.edu.lb/about/clinical-affiliates.php • https://pharmacy.lau.edu.lb/partnerships/ • https://commencement.lau.edu.lb/graduating-students/diploma-certificate-transcript.php • https://athletics.lau.edu.lb/ https://www.lau.edu.lb/experience/housing.php • https://www.lau.edu.lb/experience/health.php • https://www.lau.edu.lb/experience/career-guidance.php • https://oce.lau.edu.lb/ • https://it.lau.edu.lb/ • https://sas.lau.edu.lb/student-facilities.php • https://csc.lau.edu.lb/ • https://lcf.lau.edu.lb/ • https://alumni.lau.edu.lb/ • https://catalog.lau.edu.lb/ 	
Range of co-curricular and non-academic opportunities available to students	<ul style="list-style-type: none"> • https://eventscal.lau.edu.lb/ 	
Institutional learning and physical resources from which a student can reasonably be expected to benefit	<ul style="list-style-type: none"> • https://libraries.lau.edu.lb/ • http://comm.lau.edu.lb/facilities • https://sas.lau.edu.lb/csm/facilities/ • https://sas.lau.edu.lb/education/field-experience/ • https://sas.lau.edu.lb/institutes/ecc/ • https://sas.lau.edu.lb/english/facilities/ • https://sas.lau.edu.lb/natural-sciences/facilities/ • https://soe.lau.edu.lb/ce/facilities/ • https://soe.lau.edu.lb/ece/facilities/ • https://soe.lau.edu.lb/ime/facilities/ • https://sard.lau.edu.lb/student-resources/facilities/ • https://medicine.lau.edu.lb/related-entities/ • https://pharmacy.lau.edu.lb/patient-care/ • https://www.lau.edu.lb/experience/housing.php • https://athletics.lau.edu.lb/facilities/ • https://www.lau.edu.lb/locations/ • https://catalog.lau.edu.lb/ • https://fm.lau.edu.lb/ • https://lcf.lau.edu.lb/ • https://laumcrh.com/ 	

Information	Web Addresses	Print Publications
Institutional goals for students' education	<ul style="list-style-type: none"> • https://www.lau.edu.lb/study/ (see each program page) • https://catalog.lau.edu.lb/ (see each program page) 	
Success of students in achieving institutional goals including rates of retention and graduation and other measure of student success appropriate to institutional mission. Passage rates for licensure exams, as appropriate	<ul style="list-style-type: none"> • https://pharmacy.lau.edu.lb/about/educational_quality_indicators.php • https://www.lau.edu.lb/about/facts.php • https://commencement.lau.edu.lb/files/list.pdf • https://dira.lau.edu.lb/fact-book/ • https://dira.lau.edu.lb/assessment/surveys.php 	<p>Fact Book 2019–2020 Facts 2019–2020</p>
Total cost of education, including availability of financial aid and typical length of study	<ul style="list-style-type: none"> • https://www.lau.edu.lb/fees/ • https://www.lau.edu.lb/apply/financial-aid/ • https://nursing.lau.edu.lb/students/financial-aid.php • https://medicine.lau.edu.lb/admission/ <p>Typical length of study: see each program on https://www.lau.edu.lb/study/undergraduate/</p>	
Expected amount of student debt upon graduation	Not available online.	Not available in print.
Statement about accreditation	<ul style="list-style-type: none"> • https://www.lau.edu.lb/about/accreditation.php • https://catalog.lau.edu.lb/accreditation • https://www.lau.edu.lb/apply/admission/undergraduate/#faq • https://pharmacy.lau.edu.lb/about/ • https://sas.lau.edu.lb/about/accreditation.php • https://sas.lau.edu.lb/csm/accreditation/ • https://soe.lau.edu.lb/about/accreditation/ • https://soe.lau.edu.lb/ce/programs/be-civil/ • https://soe.lau.edu.lb/ece/programs/be-computer/ • https://soe.lau.edu.lb/ece/programs/be-electrical/ • https://soe.lau.edu.lb/ime/programs/be-industrial/ • https://soe.lau.edu.lb/ime/programs/be-mechanical/ • https://sb.lau.edu.lb/about/accreditation.php • https://nursing.lau.edu.lb/ • https://dira.lau.edu.lb/ 	<p>Fact Book 2019–2020 Facts 2019–2020</p>

