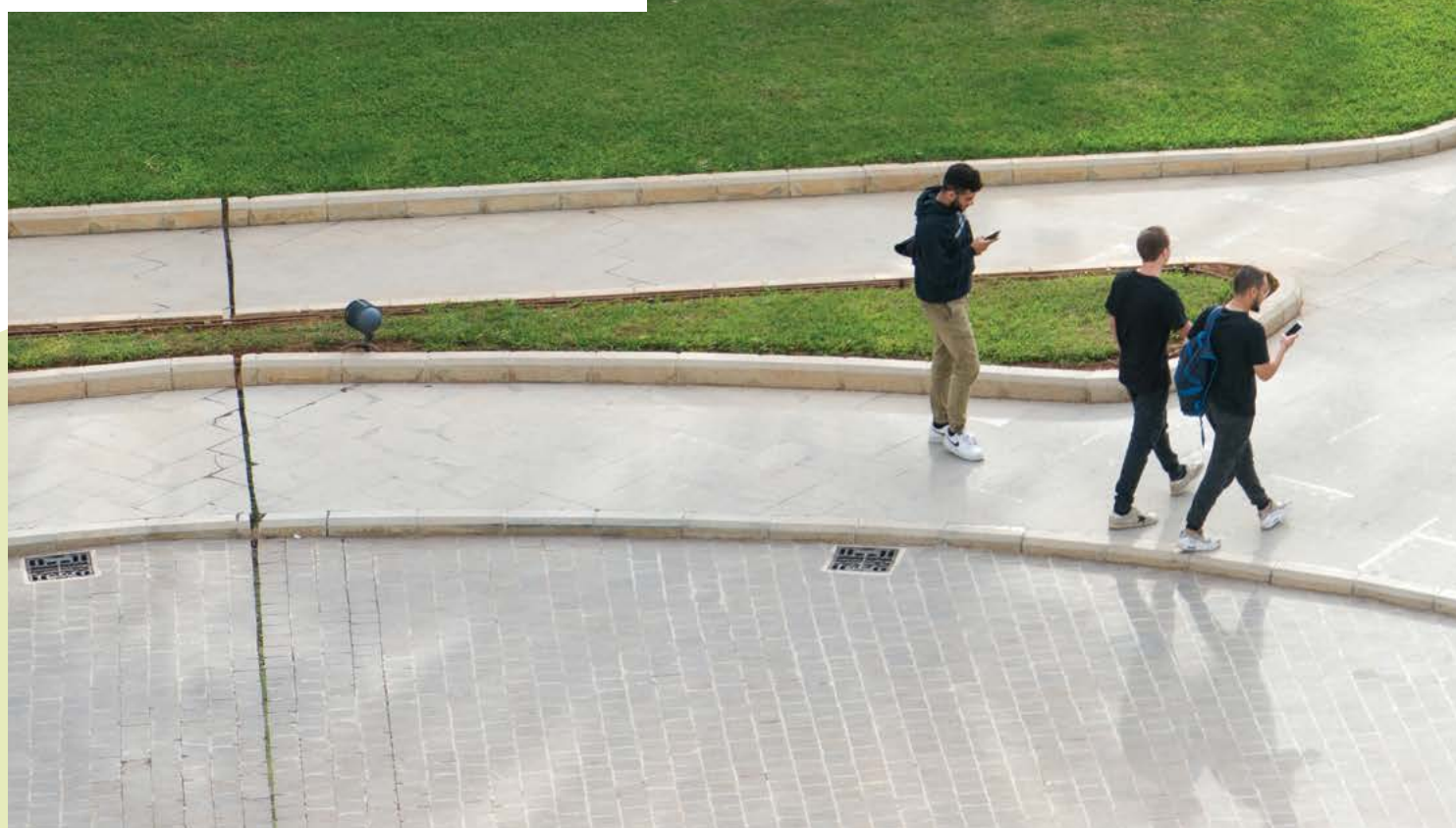


# ADMINISTRATION

## LAU PRESIDENTS

President's Name	Years of Service
Frances Irwin	1924 – 1935
Winifred Shannon	* 1935 – 1937
William A. Stoltzfus	1937 – 1958
James H. Nicol	* 1941 – 1943
Rhoda Orme	* 1954 – 1955
Grace Loucks Elliot	* 1958 – 1959
Frances M. Gray	1959 – 1965
Salwa Nassar	1965 – 1967
Cornellius B. Houk	* 1967
Marie Sabri	1967 – 1969
William H. Schechter	1969 – 1973
Albert Y. Badre	1973 – 1982
Riyad F. Nassar	1982 – 2004
Joseph G. Jabbra	2004 – present

\* Acting president







## BOARD OF TRUSTEES

### Board of Trustees

Mr. Philip Stoltzfus (Chairman)

Mr. Mike Ahmar (Vice-Chair)

Dr. Cherilyn G. Murer (Secretary)

Mr. Thomas G. Abraham

Dr. Joseph Aoun

Dr. Johnny B. Awwad

Hon. Charles Boustany Jr. M.D.

Mr. George Doumet

Dr. Charles Elachi

Dr. George N. Faris

Mr. Antoine Frem

Ambassador Edward M. Gabriel, Ret.

Dr. Robert D. Harrington

Rev. Cynthia A. Jarvis

Sheikh Walid Katibah

Mrs. Mona Nehmé

Mr. Clay Pell

Mr. Ghassan Saab

Sheikha Intisar Salem Al Ali Al Sabah

Dr. H. John Shammass, M.D.

Mr. Nicolas A. Tamari

Mr. Peter Tanous

Mr. Robert Worley

Dr. Fouad Zmokhol

### Ex-officio Members

Dr. Jihad Azour, Chairman of the Board of International Advisors

Rev. Elmarie Parker

Rev. Joseph Kassab

Dr. Tarek Na'was, Senate Chair

Dr. Joseph G. Jabbra, LAU President

## UNIVERSITY OFFICERS

FALL 2018

University Officers		
Officer	Highest Degree Earned	Administrative Title
Joseph G. Jabbra	Ph.D.	President
George E. Nasr	Ph.D.	Provost
Elise Salem	Ph.D.	Vice President for Student Development and Enrollment Management
Roy Majdalani	M.B.A.	Vice President for Human Resources and University Services
Charles Abou Rjeily	License, CPA	Vice President for Finance
George K. Najjar	Ph.D.	Vice President for Advancement
Nour Hajjar	LL.B.	Legal Counsel

Deans of Schools		
Officer	Highest Degree Earned	Administrative Title
Elie Haddad	Ph.D.	Dean of the School of Architecture & Design
Costantine Daher	Ph.D.	Interim Dean of the School of Arts & Sciences
Wassim Shahin	Ph.D.	Interim Dean of the Adnan Kassar School of Business
Raymond Ghajar	Ph.D.	Interim Dean of the School of Engineering
Michel Mawad	M.D.	Dean of the Gilbert and Rose-Marie Chagoury School of Medicine
Anahid Kulwicki	Ph.D.	Dean of the School of Nursing
Imad Btaiche	Ph.D.	Dean of the School of Pharmacy
Samer Saab	Ph.D.	Interim Dean of the Graduate Studies & Research





## Academic Affairs Officers

Officer	Highest Degree Earned	Administrative Title
Barbar Akle	Ph.D.	Assistant Provost
Rula Diab	Ph.D.	Assistant Provost

## SCHOOL OF ARCHITECTURE & DESIGN

Elie Haddad	Ph.D.	Dean
Farid Jureidini	B.Arch.	Assistant Dean
Maroun Daccache	Ph.D.	Chair, Architecture & Interior Design
Randa Abdel Baki	M.F.A.	Chair, Art & Design
Sophie Khayat	D.E.S.	Associate Chair, Architecture & Interior Design
Melissa Sinclair Khoury	M.F.A.	Associate Chair, Art & Design

## SCHOOL OF ARTS & SCIENCES

Costantine Daher	Ph.D.	Interim Dean
Haidar Harmanani	Ph.D.	Assistant Dean
Samer Habre	Ph.D.	Assistant Dean
Robin Ishac Taleb	Ph.D.	Assistant Dean
Jad Melki	Ph.D.	Chair, Communication Arts
Danielle Azar	Ph.D.	Chair, Computer Science & Mathematics
Rima Bahous	Ed.D.	Chair, Education
Victor Khachan	Ph.D.	Chair, English
Vahid Behmardi	Ph.D.	Chair, Humanities
Sima Tokajian	Ph.D.	Chair, Natural Sciences
Marwan Rowayheb	Ph.D.	Chair, Social Sciences
Nadra Assaf	Ed.D.	Associate Chair, Communication Arts & Humanities
Azzam Mourad	Ph.D.	Associate Chair, Computer Science & Mathematics
Dany Badran	Ph.D.	Associate Chair, English
Hussein Hassan	Ph.D.	Associate Chair, Natural Sciences
Sami Baroudi	Ph.D.	Associate Chair, Social Sciences



## Academic Affairs Officers

Officer Highest Degree Earned Administrative Title

### ADNAN KASSAR SCHOOL OF BUSINESS

Wassim Shahin	Ph.D.	Interim Dean
Abdallah Dah	Ph.D.	Associate Dean
Said Ladki	Ph.D.	Interim Associate Dean for Accreditation
Guy Assaker	Ph.D.	Assistant Dean
Ghassan Dibeh	Ph.D.	Chair, Economics
Elias Raad	Ph.D.	Chair, Finance & Accounting
Wissam Abdallah	Ph.D.	Chair, Finance & Accounting
Raed El-Khalil	Ph.D.	Chair, Information Technology & Operations Management
Josiane Sreih	Ph.D.	Chair, Management Studies
Maya Farah	Ph.D.	Chair, Hospitality & Marketing
Walid Marrouch	Ph.D.	Associate Chair, Economics
Rabih Nehme	Ph.D.	Associate Chair, Finance & Accounting
Rania El Haddad Chamelian	Ph.D.	Associate Chair, Hospitality & Marketing

### SCHOOL OF ENGINEERING

Raymond Ghajar	Ph.D.	Interim Dean
Michel Khoury	Ph.D.	Associate Dean
Joe Tekli	Ph.D.	Interim Assistant Dean
Caesar Abi Shdid	Ph.D.	Chair, Civil Engineering
Zahi Nakad	Ph.D.	Chair, Electrical and Computer Engineering
Charbel Mansour	Ph.D.	Interim Chair, Industrial and Mechanical Engineering
Dani Tannir	Ph.D.	Coordinator, Beirut Campus Engineering Programs



## Academic Affairs Officers

Officer	Highest Degree Earned	Administrative Title
---------	-----------------------	----------------------

### GILBERT AND ROSE-MARIE CHAGOURY SCHOOL OF MEDICINE

Michel Mawad	M.D.	Dean
Zeinat Hijazi	M.D.	Associate Dean, Medical Education
Sola Aoun Bahous	M.D., Ph.D.	Assistant Dean, Clinical Affairs
Rajaa Chatila	M.D.	Assistant Dean, Graduate Medical Education
Vanda Abi Raad	M.D.	Assistant Dean, Continuing Medical Education
Naji Riachi	M.D.	Assistant Dean, Clinical Research
Nabil Alain Sabri	M.D.	Assistant Dean, Faculty Recruitment
Tony Zreik	M.D.	Assistant Dean, Business Development
Elie Abi Nader	M.D.	Acting Chair, Anesthesiology
Zeina Tannous	M.D.	Chair, Dermatology
Jacques Mokhbat	M.D.	Chair, Internal Medicine
Hussein Farhat	M.D.	Acting Chair, Laboratory Medicine
Tony Zreik	M.D.	Chair, Obstetrics and Gynecology
Nicola Ghazi	M.D.	Chair, Ophthalmology
Nabil Alain Sabri	M.D.	Chair, Otolaryngology
Noha Doueih	M.D.	Acting Chair, Pathology
Gerard Wakim	M.D.	Acting Chair, Pediatrics
Daniel Mahfoud	M.D.	Acting Chair, Radiology
Bassem Safadi	M.D.	Chair, Surgery

### ALICE RAMEZ CHAGOURY SCHOOL OF NURSING

Anahid Kulwicki	Ph.D.	Dean
Myrna Abi-Abdallah Doumit	Ph.D.	Assistant Dean

### SCHOOL OF PHARMACY

Imad Btaiche	Pharm.D.	Dean
Roy Kanbar	Pharm.D., Ph.D.	Associate Dean, Academic Affairs
Anthony Capomacchia	Ph.D.	Assistant Dean, Student Affairs
Soumana Nasser	Pharm.D.	Chair, Pharmacy Practice
Mohammad Mroueh	Pharm.D., Ph.D.	Chair, Pharmaceutical Sciences
Lamis Karaoui	Pharm.D.	Director, Experiential Education



## Academic Affairs Officers

Officer	Highest Degree Earned	Administrative Title
---------	-----------------------	----------------------

### GRADUATE STUDIES & RESEARCH

Samer Saab	Ph.D.	Interim Dean
------------	-------	--------------

Walid Marrouch	Ph.D.	Assistant Dean
----------------	-------	----------------

### LIBRARY

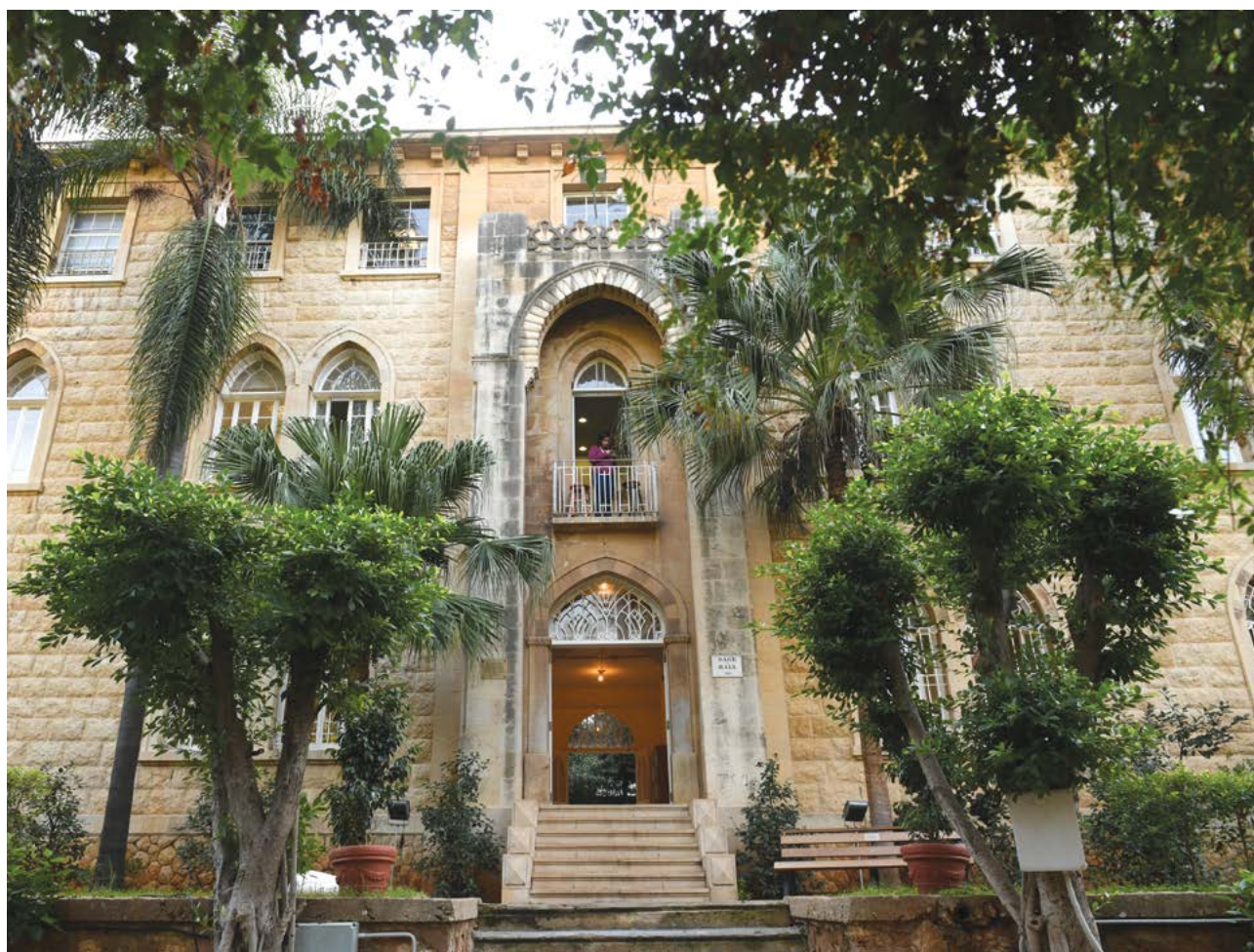
Cendrella Habre	M.S.	University Librarian
-----------------	------	----------------------

Houeida Charara	M.S.	Lead Director of Collection Management
-----------------	------	--

Marie-Therese Mitri	M.A.	Lead Director of Public Services, Research & Instruction
---------------------	------	--

### CONTINUING EDUCATION

Charbel Azar	M.B.A.	Director
--------------	--------	----------



## Student Development and Enrollment Management Officers

Officer	Highest Degree Earned	Administrative Title
<b>ENROLLMENT MANAGEMENT</b>		
Abdo Ghié	M.A.P.	Assistant Vice President
<b>DEAN OF STUDENTS</b>		
Raed Mohsen	Ph.D.	Dean, Beirut
Makram Ouaiss	Ph.D.	Dean, Byblos
<b>ADMISSIONS</b>		
Nada Kassem Hajj	M.S.	Senior Director
<b>STUDENT RECRUITMENT</b>		
Michel Najjar	M.S.	Executive Director
<b>ATHLETICS</b>		
Sami Garabedian	M.S.Ed.	Director, Beirut
Joe Moujaes	M.S.	Lead Director, Byblos
<b>FINANCIAL AID AND SCHOLARSHIPS</b>		
Ghada Abi Fares	M.B.A.	University Director
<b>OUTREACH AND CIVIC ENGAGEMENT</b>		
Elie Samia	M.A.	Assistant Vice President
<b>REGISTRAR</b>		
Annie Lajinian-Magarian	M.Ed.	University Registrar
Fouad Salibi	B.A.	Senior Associate Registrar
<b>RESIDENCE HALLS</b>		
Rima Rahal	B.S.	Supervisor, Beirut
Assia Kanaan	M.Ed.	Senior Supervisor, Beirut
Suzy Saba	T.S.	Coordinator, Byblos
<b>INTERNATIONAL SERVICES</b>		
Dina Abdul Rahman	M.B.A.	Director

## Human Resources and University Services Officers

Officer	Highest Degree Earned	Administrative Title
<b>BUSINESS SERVICES</b>		
Jassem Othman	B.E.	Senior Director, Auxiliary Services
Ghassan Atwi	B.A., B.S.	Director, Procurement, Beirut
Antoine Faris	M.S.	Senior Director, Procurement, Byblos
Jean Rizk	M.B.A.	Director, Supply
<b>FACILITIES MANAGEMENT</b>		
George Hamouche	M.S.	Assistant Vice President
Shaheen Bou Jawdeh	LL.M.	Executive Director, Project Management and Contract Administration
Joseph Shebaya	Diplome	Executive Director, Planning and Renovations
Roger Haddad	M.B.A.	Senior Director, Physical Plant, Beirut
Ziad Haddad	M.B.A.	Senior Director, Physical Plant, Byblos
Nabil Bedran	B.E.	Senior Director, Capital Construction Management, Beirut
Toufic Smayra	Ph.D.	Senior Director, Capital Construction Management, Byblos
<b>HUMAN RESOURCES</b>		
Charbel Aoun	M.B.A.	Assistant Vice President
Nicolas Majdalani	License	Director, BPR & HRA
Ruba Nassar Tohme	M.B.A.	Director, Compensation & Benefits
Antoinette Daher	License	Deputy Director, Compensation & Benefits
Grace Lebbos	E.M.B.A.	Deputy Director, Staff Relations & Development
<b>INFORMATION TECHNOLOGY</b>		
Camille Abou-Nasr	B.E.	Assistant Vice President
Roula Hage	Diplome	Director, IT Applications & Solutions
Hamid Saliba	Diplome	Director, IT Network, Telecom & Multimedia
Rodolph Aouad	License	Deputy Director, IT Security
Hady Tanissa	M.S.	Deputy Director, IT Support
<b>PROTECTION</b>		
Major Ahmad Hassouna	Lieutenant	Director

## Finance Officers

Officer	Highest Degree Earned	Administrative Title
---------	-----------------------	----------------------

### BUDGET AND FINANCIAL PLANNING

Naji Medlej	D.E.A.	Executive Director
-------------	--------	--------------------

### GRANTS AND CONTRACTS

Mario Rebeiz	M.A.	Director
--------------	------	----------

### COMPTROLLER

Simon Sakr	M.B.A.	Assistant Vice President, University Comptroller
------------	--------	--

Elias Kassir	License	Assistant Vice President, Operations
--------------	---------	--------------------------------------

### BUSINESS OFFICE

Rola Fares	B.S.	Comptroller, Finance Operations, Beirut
------------	------	---

Farid El Daoud	M.B.A.	Comptroller, Accounting & Financial Reporting, Beirut
----------------	--------	---

Michel Chahine	M.S.	Senior Comptroller, Finance Operations, Byblos
----------------	------	--

## University Advancement Officers

Officer	Highest Degree Earned	Administrative Title
---------	-----------------------	----------------------

### DEVELOPMENT

Nassib Nasr	M.P.H.	Assistant Vice President, New York
-------------	--------	------------------------------------

Nicole Barghoud	B.A.	Assistant Vice President, Beirut
-----------------	------	----------------------------------

Lana Abou Teen	M.A.	Director, Development
----------------	------	-----------------------

Ghandi Fala	B.S.	Director, Development
-------------	------	-----------------------

### ADVANCEMENT SERVICES

Amal Abdel Massih	B.S.	Executive Director, Advancement Services, Beirut
-------------------	------	--

Marge Pfeleiderer	B.A.	Executive Director, Operations, New York
-------------------	------	--

### ALUMNI AFFAIRS

Abdallah Al Khal	M.B.A.	Assistant Vice President, Alumni Relations, Beirut
------------------	--------	--

Edward Shiner	M.A.	Director, Alumni and Special Projects, New York
---------------	------	---

### STRATEGIC COMMUNICATIONS

Gabriel Abiad	M.B.A.	Assistant Vice President
---------------	--------	--------------------------

Nada Torbey	M.A.	Senior Director, Media & Public Relations
-------------	------	---

Elida Jbeili	M.A.	Director, Communications & Media, New York
--------------	------	--

Karina Rodriguez	B.A.	Director, Integrated Marketing Communications
------------------	------	---

Serge Zahar	D.E.S.	Lead Director, Creative Services
-------------	--------	----------------------------------

## Institutional Research and Assessment officers

Diane Issa Nauffal	Ph.D.	Assistant to the President
--------------------	-------	----------------------------

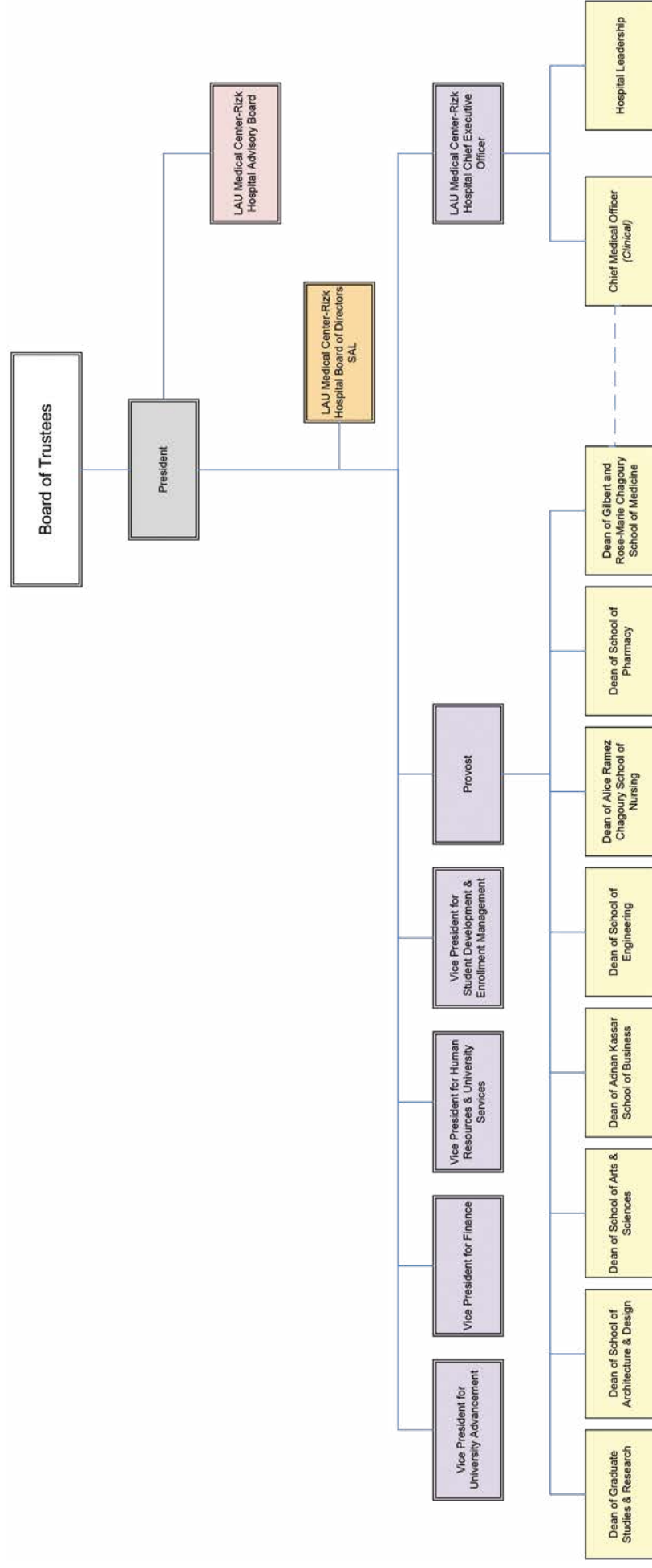
## Internal Audit Officers

Khaled Abul Husn	M.B.A, C.P.A	Director
------------------	--------------	----------

## University Enterprise OFFICERS

Walid Touma	Ph.D.	Director
-------------	-------	----------

## ORGANIZATIONAL CHART – INSTITUTION



**\*\* This organizational structure represents a centralized model, which will bring LAU and all its subsidiaries including LAU Medical Center-Rizk Hospital SAL under the same fiduciary duties of the Board of Trustees and the leadership of LAU President.**